

D R A W I N G N O T E S

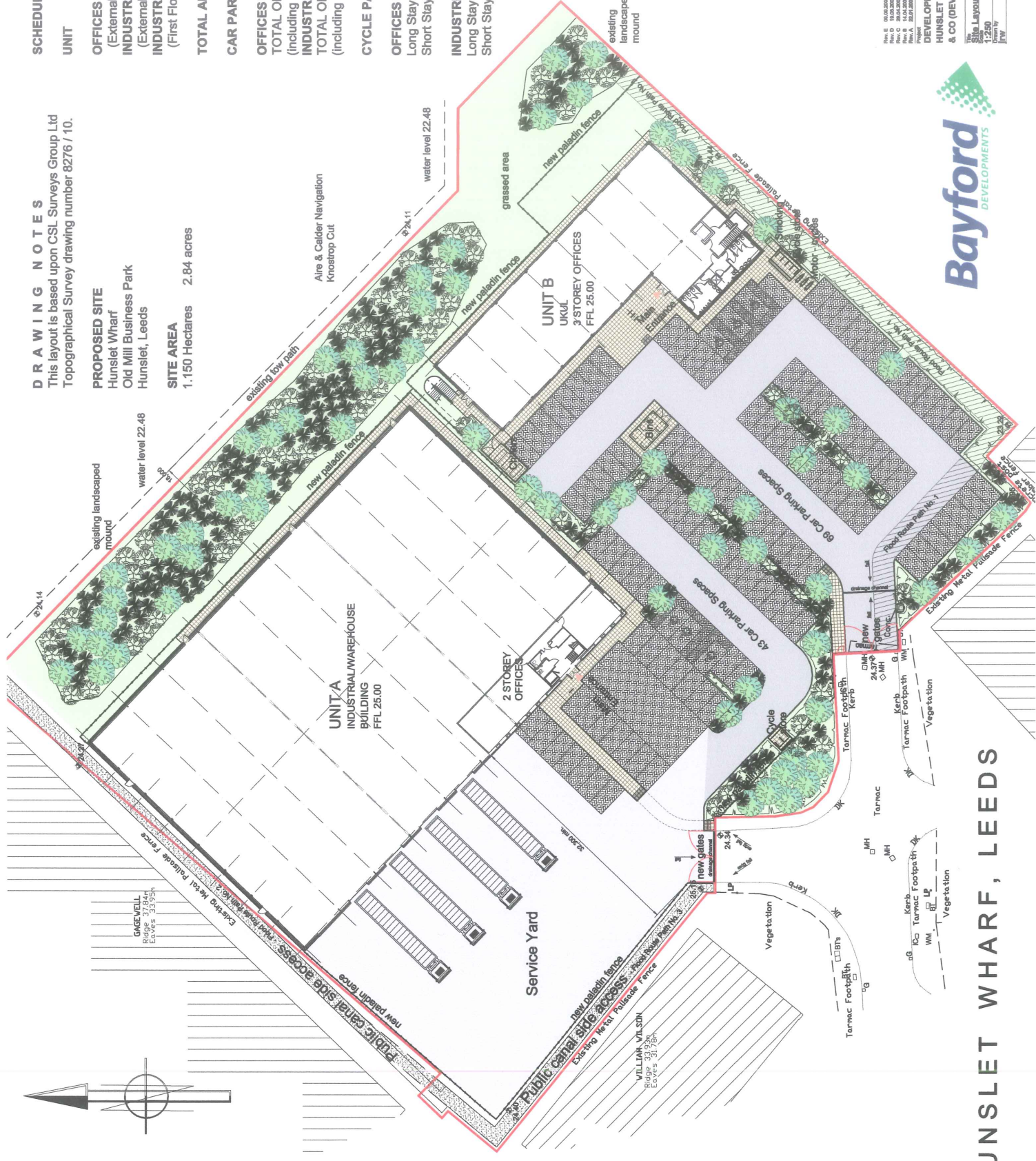
This layout is based upon CSL Surveys Group Ltd Topographical Survey drawing number 8276 / 10.

PROPOSED SITE

Hunslet Wharf
Old Mill Business Park
Hunslet, Leeds

SITE AREA

1.150 Hectares 2.84 acres



SCHEDULE OF AREAS

UNIT	SQ.M	SQ.FT
OFFICES (External Area)	2,220	23,896
INDUSTRIAL UNIT (External Area)	2,785	30,000
INDUSTRIAL UNIT (First Floor Offices)	163	1,755
TOTAL AREA	5,168	55,651

CAR PARKING

OFFICES
TOTAL OF 72 CAR PARKING SPACES
(including 4 disabled parking spaces)

INDUSTRIAL UNIT
TOTAL OF 43 CAR PARKING SPACES
(including 3 disabled parking spaces)

CYCLE PARKING

OFFICES
Long Stay - 15 cycles within covered enclosure
Short Stay - 3 cycles located near main entrance

INDUSTRIAL UNIT

Long Stay - 3 cycles within covered enclosure
Short Stay - 1 cycle located near main entrance

EXTERNAL SURFACES

- Indicative soft landscaping to be designed by others
- Precast concrete paving by Marshalls - Type Sazon - size 400 x 400mm - colour - Buff
- Concrete block paving by Marshalls - Type Keyblock - size 200 x 100mm - colour - Brindle
- Terrasolium - colour - Black
- All-entrained concrete service yard
- Black palatium fencing to boundaries
- 3 metre Flood Route Path No.1

Rev. E 05.05.2009 Unit B floor line revised, colour stone and window sashes added to detail elevations.
Rev. D 10.05.2009 Car parking provisions revised for Planning Requirements.
Rev. C 11.05.2009 Unit B floor line revised, landscaping and drainage details added.
Rev. B 14.04.2009 Drainage channels added, indicated car parking details updated for Planning Dept.
Rev. A 23.07.2008 Car parking revised to suit 8 storey Office building to address Planning Dept.

DEVELOPMENT at
HUNSLET WHARF for BAYFORD
& CO (DEVELOPMENTS) LTD

Bayford DEVELOPMENTS

GARNETT NETHERWOOD ARCHITECTS

The Site Layout was prepared by:
Date: January 2008
Drawn: [Name]
Checked: [Name]
Reviewed: [Name]

HUNSLET WHARF, LEEDS

